



"Quick Ship" Selection
In Stock at The Kitchen Store

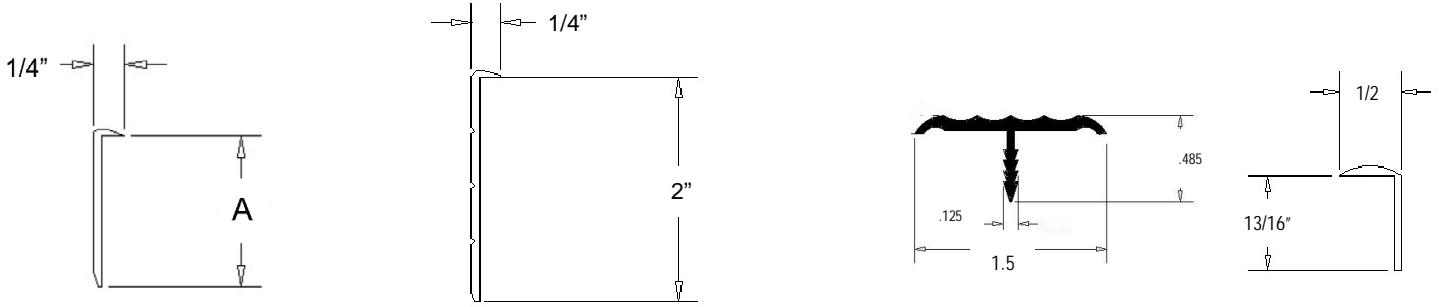
(Full-Line Catalogs available online or call.)

6322 W. Slauson Ave.
 Culver City, Ca 90230
 P: (310) 839-5215
 F: (310) 572-1015

www.StudioSupplier.com

ALUMINUM MOLDING

Counter Edging - 12 ft. lengths



Covers (A) Item#

Item#

Item#

Item#

- 1/2" 7429
- 3/4" 7428
- 7/8" 7432
- 1-1/4" 7431
- 1-5/8" 9538**

7435



Stock Finish: Polished & Drilled

5239



Stock Finish: Polished

7433

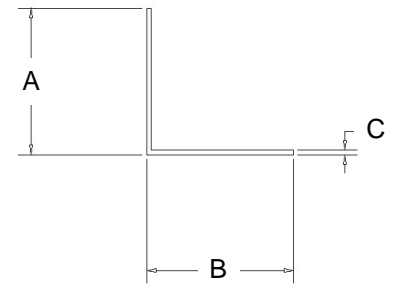
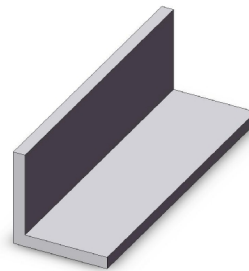
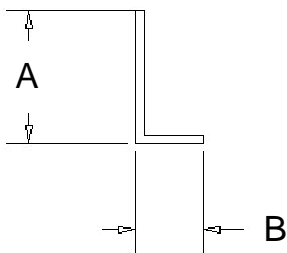
**Heavy Lip
Edge Trim**

Stock Finish:
Satin Anodized
(Undrilled)

Stock Finish: Satin Anodized & Drilled
 **(#9538 Stocked in Polished Finish)

Angles - 12 ft. lengths

Stock Finish: Satin Anodized



1/16" Wall Thickness

Outside Legs (A x B) Item#

- 3/4" x 1/2" 1544
- 1" x 1/2" 7413
- 1-1/2" x 1/2" 9436

1/16" Wall Thickness (C)

Outside Legs (A x B) Item#

- 1/2" x 1/2" 1551
- 3/4" x 3/4" 2158
- 1" x 1" 2167
- 1-1/2" x 1-1/2" 1555

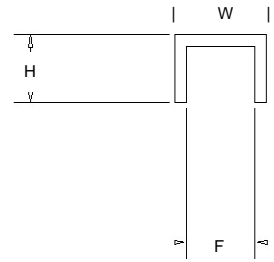
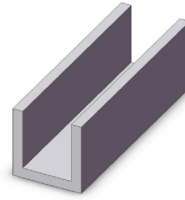
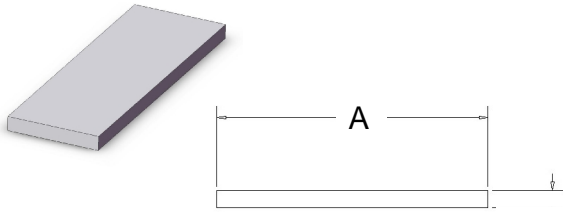
1/8" Wall Thickness (C)

Outside Legs (A x B) Item#

- 3/4" x 3/4" 1202
- 1" x 1" 2091
- 1-1/2" x 1-1/2" 2073
- 2" x 2" 7025

Flat Bars - 12 ft. lengths

Channels - 12 ft. lengths



Width (A) Item#

Base (W) x Legs (H) - Fits (F)

Item#

1/16" Wall Thickness

1/2" 2592

1/8" Wall Thickness

1/2" 1058

3/4" 2126

1" 7849

1-1/2" 6313

2" 7850

Stock Finish: Satin Anodized

1/16" Wall Thickness

3/8" x 5/16" - Fits 1/4" A239

1/2" x 1/2" - Fits 3/8" 2303

11/16" x 1/2" - Fits 9/16" 1801

1/2" x 3/4" - Fits 3/8" 8105**

21/32" (0.650") x 25/32 (0.800") - Fits 17/32" 4649**

7/8" x 5/16" - Fits 3/4" 7405

15/16" x 9/16" - Fits 13/16" 6500

Stock Finish: Satin Anodized

**#8105 & #4649 also Stocked in Polished Finish

Panel Molding and Trim Moldings - 12 ft. lengths

Stock Finish: Satin Anodized

Trim for 1/8" or 5/32" - thick panels

(#3355, #3802 & #3352 = 8' lengths)



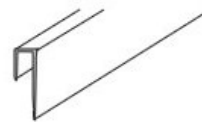
7438



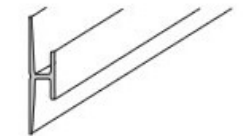
A420



7424



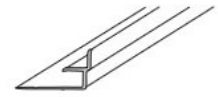
7985



3355



3802



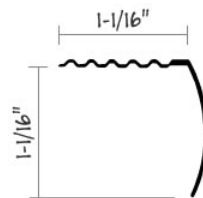
3352

CARPET BAR - 12'



CWS113
HAMMERED GOLD (GT)
OR SILVER (RT)

STAIR NOSING - 12'



CWS4128
HAMMERED GOLD (GT)
OR SILVER (RT)