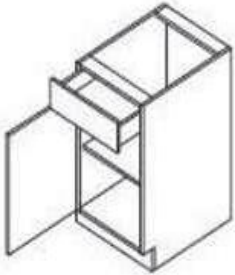


Single Door Base Cabinets

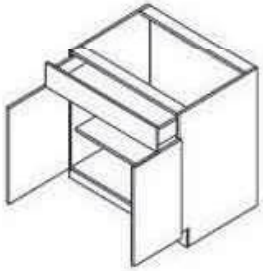
One Drawer, One Full Depth Shelf
Indicate Right or Left Hinge



Description	
B09- R / L	Dimensions: 9" W, 34 ½" H, 23 3/8" D
B12- R / L	Dimensions: 12" W, 34 ½" H, 23 3/8" D
B15- R / L	Dimensions: 15" W, 34 ½" H, 23 3/8" D
B18- R / L	Dimensions: 18" W, 34 ½" H, 23 3/8" D
B21- R / L	Dimensions: 21" W, 34 ½" H, 23 3/8" D

Double Door Base Cabinets

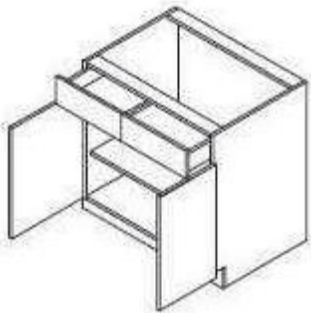
One Drawer, One Full Depth Shelf



Description	
B24	Dimensions: 24" W, 34 ½" H, 23 3/8" D
B27	Dimensions: 27" W, 34 ½" H, 23 3/8" D
B30	Dimensions: 30" W, 34 ½" H, 23 3/8" D
B33	Dimensions: 33" W, 34 ½" H, 23 3/8" D

Double Door Base Cabinets

Two Drawers, One Full Depth Shelf

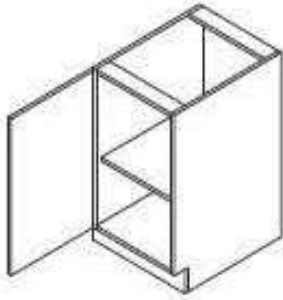


Description	
B36	Dimensions: 36" W, 34 ½" H, 23 3/8" D
B39	Dimensions: 39" W, 34 ½" H, 23 3/8" D
B42	Dimensions: 42" W, 34 ½" H, 23 3/8" D

Base Cabinets

Full Height Single Door Base Cabinets

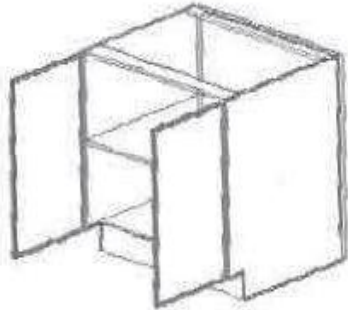
One Full Depth Shelf
Indicate Right or Left Hinge



Description	
B09F - R / L	Dimensions: 9" W, 34 1/2" H, 23 3/8" D
B12F- R / L	Dimensions: 12" W, 34 1/2" H, 23 3/8" D
B15F- R / L	Dimensions: 15" W, 34 1/2" H, 23 3/8" D
B18F- R / L	Dimensions: 18" W, 34 1/2" H, 23 3/8" D
B21F- R / L	Dimensions: 21" W, 34 1/2" H, 23 3/8" D

Full Height Double Door Base Cabinets

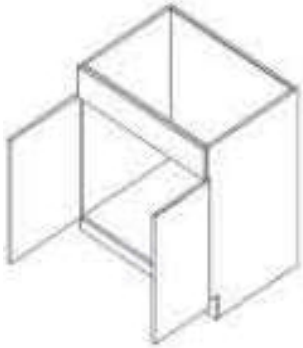
One Full Depth Shelf



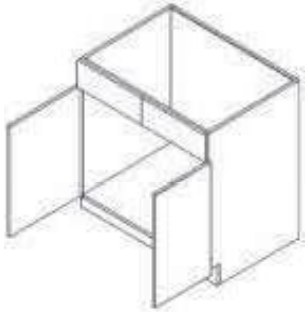
Description	
B24F	Dimensions: 24" W, 34 1/2" H, 23 3/8" D
B27F	Dimensions: 27" W, 34 1/2" H, 23 3/8" D
B30F	Dimensions: 30" W, 34 1/2" H, 23 3/8" D
B33F	Dimensions: 33" W, 34 1/2" H, 23 3/8" D
B36F	Dimensions: 36" W, 34 1/2" H, 23 3/8" D
B39F	Dimensions: 39" W, 34 1/2" H, 23 3/8" D
B42F	Dimensions: 42" W, 34 1/2" H, 23 3/8" D

Sink Base Cabinets

One False Front



Description	
SB30	Dimensions: 30" W, 34 ½" H, 23 3/8" D
SB33	Dimensions: 33" W, 34 ½" H, 23 3/8" D

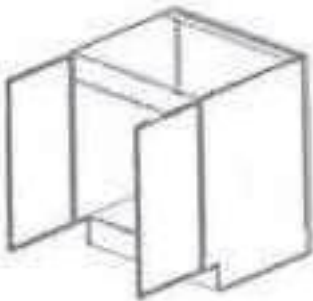


Two False Fronts

Description	
SB36	Dimensions: 36" W, 34 ½" H, 23 3/8" D
SB39	Dimensions: 39" W, 34 ½" H, 23 3/8" D
SB42	Dimensions: 42" W, 34 ½" H, 23 3/8" D

Full Height Sink Base Cabinets

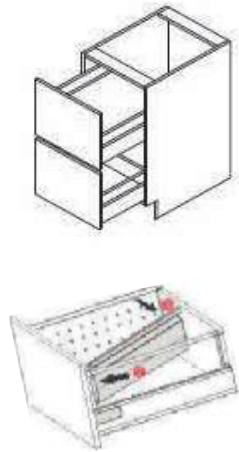
Valance Behind Doors to Conceal Sink



Description	
SB30F	Dimensions: 30" W, 34 ½" H, 23 3/8" D
SB33F	Dimensions: 33" W, 34 ½" H, 23 3/8" D
SB36F	Dimensions: 36" W, 34 ½" H, 23 3/8" D
SB39F	Dimensions: 39" W, 34 ½" H, 23 3/8" D
SB42F	Dimensions: 42" W, 34 ½" H, 23 3/8" D

Two Drawer Base Cabinets

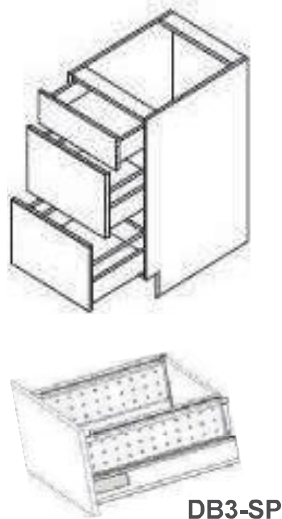
Two 15" High Deep Drawers



Description	
DB18-2	Dimensions: 18" W, 34 1/2" H, 23 3/8" D
DB21-2	Dimensions: 21" W, 34 1/2" H, 23 3/8" D
DB24-2	Dimensions: 24" W, 34 1/2" H, 23 3/8" D
DB30-2	Dimensions: 30" W, 34 1/2" H, 23 3/8" D
DB36-2	Dimensions: 36" W, 34 1/2" H, 23 3/8" D
DB2-SP	Metal Drawer Side Panel for 2 Drawer Base Units Sold Per Pair

Three Drawer Base Cabinets

One 6" High Drawer, Two 12" High Drawers

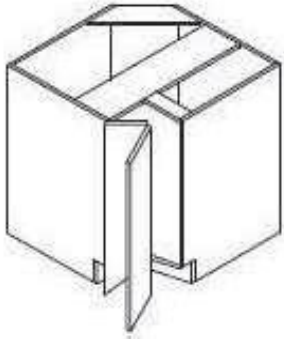


DB3-SP

Description	
DB12-3	Dimensions: 12" W, 34 1/2" H, 23 3/8" D
DB15-3	Dimensions: 15" W, 34 1/2" H, 23 3/8" D
DB18-3	Dimensions: 18" W, 34 1/2" H, 23 3/8" D
DB21-3	Dimensions: 21" W, 34 1/2" H, 23 3/8" D
DB24-3	Dimensions: 24" W, 34 1/2" H, 23 3/8" D
DB27-3	Dimensions: 27" W, 34 1/2" H, 23 3/8" D
DB30-3	Dimensions: 30" W, 34 1/2" H, 23 3/8" D
DB33-3	Dimensions: 33" W, 34 1/2" H, 23 3/8" D
DB36-3	Dimensions: 36" W, 34 1/2" H, 23 3/8" D
DB3-SP	Metal Drawer Side Panel for 3 Drawer Base Units Sold Per Pair Can be field trimmed for vanity application

Base Lazy Susan Cabinets

Two Stainless Steel Lazy Susans
Indicate Right or Left Hinge



Description	
BLS33-R / L	Dimensions: 33" W, 34 1/2" H, 23 3/8" D 9" Wide Doors
BLS36- R / L	Dimensions: 36" W, 34 1/2" H, 23 3/8" D 12" Wide Doors

Base Blind Corner Cabinets

Order Blind Right or Blind Left
Requires an Additional Filler for Opposite Wall- Order Separately



Right



Left

Description	
BBC36/42- R/L	Dimensions: 36" W, 34 1/2" H, 23 3/8" D Requires 6" Pull from Wall 12" Wide Door
BBC42/45- R/L	Dimensions: 42" W, 34 1/2" H, 23 3/8" D Requires 3" Pull from Wall 18" Wide Door



Base Blind Cabinet with Swing Out Shelves

Require 3" Pull from Wall
 Two Swing Out Shelves
 Order Blind Right or Blind Left
 Requires an Additional Filler for Opposite Wall- Order Separately

Description	
BBC-SO42/45- R/L	Dimensions: 42" W, 34 1/2" H, 23 3/8" D 18" Wide Door



Base Blind Cabinet with Magic Corner

Require 3" Pull from Wall
 Order Blind Right or Blind Left
 Requires an Additional Filler for Opposite Wall- Order Separately

Description	
BBC-M 42/45- R/L	Dimensions: 42" W, 34 1/2" H, 23 3/8" D 18" Wide Door



Base Blind Cabinet with Pull Slide Pull Insert

Require 3" Pull from Wall
 Order Blind Right or Blind Left
 Requires an Additional Filler for Opposite Wall- Order Separately

Description	
BBC-PSP 42/45- R/L	Dimensions: 42" W, 34 1/2" H, 23 3/8" D 18" Wide Door

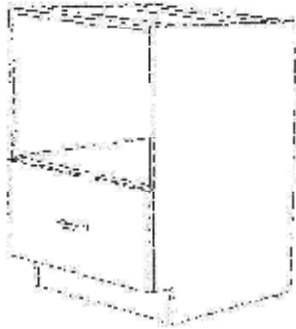
Base Microwave Cabinets

12" Drawer at Bottom

One Fixed Shelf for Appliance

Recommended Use with BMCPNL

Interior is White Melamine



Description	
BMC24	Dimensions: 24" W, 23 3/8" D, 34 1/2"H Opening Dimension: 22 1/2" w x 16 3/4" h
BMC27	Dimensions: 27" W, 23 3/8" D, 34 1/2"H Opening Dimension: 25 1/2" w x 16 3/4" h
BMC30	Dimensions: 30"W, 23 3/8"D, 34 1/2"H Opening Dimension: 28 1/2" w x 16 3/4" h
BMCPNL24	Base Microwave Panel 24" Wide Dimensions: 23 7/8" W, 17 3/4" H x 3/4" D
BMCPNL27	Base Microwave Panel 24" Wide Dimensions: 26 7/8" W, 17 3/4" H x 3/4" D
BMCPNL30	Base Microwave Panel 30" Wide Dimensions: 29 7/8" W, 17 3/4" H x 3/4" D

Trash Pull Out Base Cabinets

1 Drawer, 1 Door

15" Wide: Two 27 Quart Trash Cans

18" Wide: Two 35 Quart Trash Cans

Door Attaches to Front of Glides



Standard



Soft Close

Description	
BWBK15	Dimensions: 15" W, 34 1/2" H, 23 3/8" D
BWBK18	Dimensions: 18" W, 34 1/2" H, 23 3/8" D
BWBK15-SC Soft Close	Dimensions: 15" W, 34 1/2" H, 23 3/8" D
BWBK18-SC Soft Close	Dimensions: 18" W, 34 1/2" H, 23 3/8" D



Base Spice Rack Cabinets

Two Wire Shelves

Full Height Door

Door Attached to Soft Close Glides

Description	
TB06	Dimensions: 6" W, 34 ½" H, 23 3/8" D
TB09	Dimensions: 9" W, 34 ½" H, 23 3/8" D
TB12	Dimensions: 12" W, 34 ½" H, 23 3/8" D



Base Organizer Cabinets

Top: Utensil Hooks, Knife Block, Cutting Board Slot, Utensil Holder, Wire Shelf

Bottom: Wire Shelf with Drip Pan

Full Height Door

Door Attached to Soft Close Glides

Description	
B09-Org	Dimensions: 9" W, 34 ½" H, 23 3/8" D
B12-Org	Dimensions: 12" W, 34 ½" H, 23 3/8" D
B15-Org	Dimensions: 15" W, 34 ½" H, 23 3/8" D
B18-Org	Dimensions: 18" W, 34 ½" H, 23 3/8" D

30" High Single Door Wall Cabinets

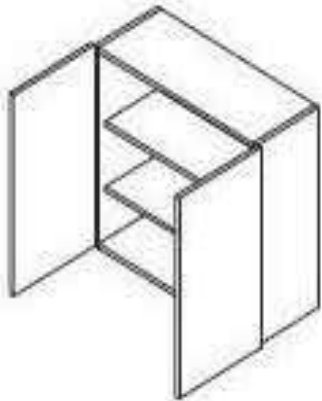
Two Adjustable Shelves



Description	
W0930	Dimensions: 9" W, 30" H, 11 5/8" D
W1230	Dimensions: 12" W, 30" H, 11 5/8" D
W1530	Dimensions: 15" W, 30" H, 11 5/8" D
W1830	Dimensions: 18" W, 30" H, 11 5/8" D
W2130	Dimensions: 21" W, 30" H, 11 5/8" D

30" High Double Door Wall Cabinets

Two Adjustable Shelves



Description	
W2430	Dimensions: 24" W, 30" H, 11 5/8" D
W2730	Dimensions: 27" W, 30" H, 11 5/8" D
W3030	Dimensions: 30" W, 30" H, 11 5/8" D
W3330	Dimensions: 33" W, 30" H, 11 5/8" D
W3630	Dimensions: 36" W, 30" H, 11 5/8" D
W4230	Dimensions: 42" W, 30" H, 11 5/8" D

36" High Single Door Wall Cabinets

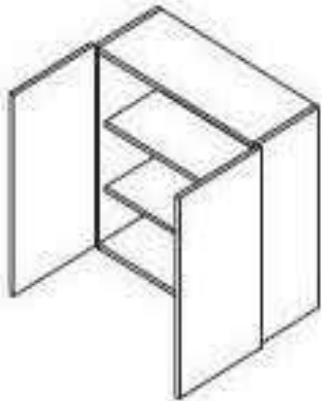
Two Adjustable Shelves



Description	
W0936	Dimensions: 9" W, 36" H, 11 5/8" D
W1236	Dimensions: 12" W, 36" H, 11 5/8" D
W1536	Dimensions: 15" W, 36" H, 11 5/8" D
W1836	Dimensions: 18" W, 36" H, 11 5/8" D
W2136	Dimensions: 21" W, 36" H, 11 5/8" D

36" High Double Door Wall Cabinets

Two Adjustable Shelves



Description	
W2436	Dimensions: 24" W, 36" H, 11 5/8" D
W2736	Dimensions: 27" W, 36" H, 11 5/8" D
W3036	Dimensions: 30" W, 36" H, 11 5/8" D
W3336	Dimensions: 33" W, 36" H, 11 5/8" D
W3636	Dimensions: 36" W, 36" H, 11 5/8" D
W4236	Dimensions: 42" W, 36" H, 11 5/8" D

42" High Single Door Wall Cabinets

Three Adjustable Shelves



Description	
W0942	Dimensions: 9" W, 42" H, 11 5/8" D
W1242	Dimensions: 12" W, 42" H, 11 5/8" D
W1542	Dimensions: 15" W, 42" H, 11 5/8" D
W1842	Dimensions: 18" W, 42" H, 11 5/8" D
W2142	Dimensions: 21" W, 42" H, 11 5/8" D

42" High Double Door Wall Cabinets

Three Adjustable Shelves



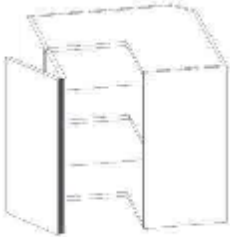
Description	
W2442	Dimensions: 24" W, 42" H, 11 5/8" D
W2742	Dimensions: 27" W, 42" H, 11 5/8" D
W3042	Dimensions: 30" W, 42" H, 11 5/8" D
W3342	Dimensions: 33" W, 42" H, 11 5/8" D
W3642	Dimensions: 36" W, 42" H, 11 5/8" D
W4242	Dimensions: 42" W, 42" H, 11 5/8" D

Wall Diagonal Corner Cabinets



Description	
WDC2430	Dimensions: 24" W, 30" H, 11 15/16" D Two Adjustable Shelves
WDC2436	Dimensions: 24" W, 36" H, 11 15/16" D Two Adjustable Shelves
WDC2442	Dimensions: 24" W, 42" H, 11 15/16" D Three Adjustable Shelves

Easy Reach Corner Cabinets



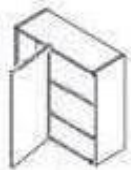
Description	
EZ2430	Dimensions: 24" W, 30" H, 24" D Two Adjustable Shelves
EZ2436	Dimensions: 24" W, 36" H, 24" D Two Adjustable Shelves
EZ2442	Dimensions: 24" W, 42" H, 24" D Three Adjustable Shelves

Wall Blind Corner Cabinets

No Pull Required from the Wall

Indicate Right or Left Blind

All Blind Corner Cabinets Require an Additional Filler for Opposite Wall- Order Separately



Left

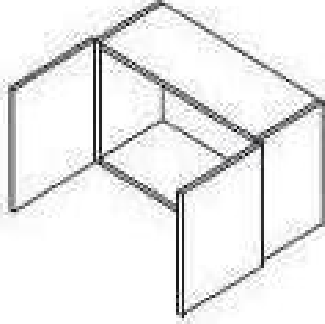


Right

Description	
WBC2730-L/R	Dimensions: 27" W, 30" H, 11 5/8" D Two Adjustable Shelves
WBC2736-L/R	Dimensions: 27" W, 36" H, 11 5/8" D Two Adjustable Shelves
WBC2742-L/R	Dimensions: 27" W, 42" H, 11 5/8" D Three Adjustable Shelves

12" Deep Wall Bridge Cabinets

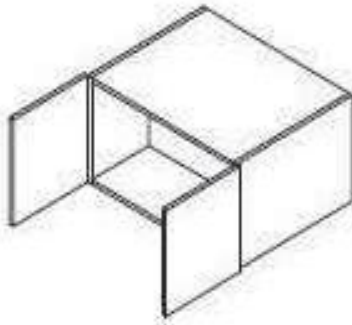
No Interior Shelf Unless Noted



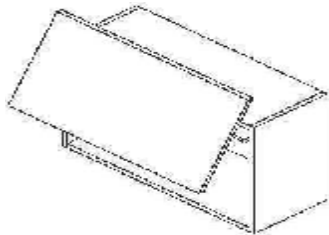
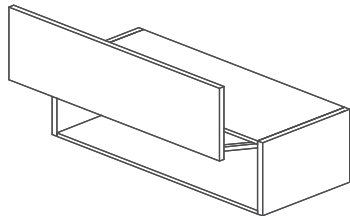
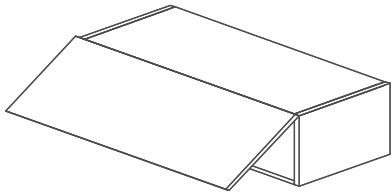
Description	
W3012	Dimensions: 30" W, 12" H, 11 5/8" D
W3015	Dimensions: 30" W, 15" H, 11 5/8" D
W3018	Dimensions: 30" W, 18" H, 11 5/8" D
W3021	Dimensions: 30" W, 21" H, 11 5/8" D
W3024	Dimensions: 30" W, 24" H, 11 5/8" D One Shelf
W3612	Dimensions: 36" W, 12" H, 11 5/8" D
W3615	Dimensions: 36" W, 15" H, 11 5/8" D
W3618	Dimensions: 36" W, 18" H, 11 5/8" D
W3621	Dimensions: 36" W, 21" H, 11 5/8" D
W3624	Dimensions: 36" W, 24" H, 11 5/8" D One Shelf

24" Deep Wall Bridge Cabinets

No Interior Shelf Unless Noted



Description	
W301224	Dimensions: 30" W, 12" H, 23 3/8" D
W301524	Dimensions: 30" W, 15" H, 23 3/8" D
W301824	Dimensions: 30" W, 18" H, 23 3/8" D
W302124	Dimensions: 30" W, 21" H, 23 3/8" D
W302424	Dimensions: 30" W, 24" H, 23 3/8" D One Shelf
W302724	Dimensions: 30" W, 27" H, 23 3/8" D One Shelf
W303024	Dimensions: 30" W, 30" H, 23 3/8" D Two Shelves
W303624	Dimensions: 30" W, 36" H, 23 3/8" D Two Shelves
W304224	Dimensions: 30" W, 42" H, 23 3/8" D Three Shelves
W361224	Dimensions: 36" W, 12" H, 23 3/8" D
W361524	Dimensions: 36" W, 15" H, 23 3/8" D
W361824	Dimensions: 36" W, 18" H, 23 3/8" D
W362124	Dimensions: 36" W, 21" H, 23 3/8" D
W362424	Dimensions: 36" W, 24" H, 23 3/8" D One Shelf



Swing Up Wall Bridge Cabinets

Description	
WS3015	Dimensions: 30" W, 15" H, 11 5/8" D
WS3018	Dimensions: 30" W, 18" H, 11 5/8" D
WS3021	Dimensions: 30" W, 21" H, 11 5/8" D
WS3615	Dimensions: 36" W, 15" H, 11 5/8" D
WS3618	Dimensions: 36" W, 18" H, 11 5/8" D
WS3621	Dimensions: 36" W, 21" H, 11 5/8" D

Lift Up Wall Bridge Cabinets Needs Clearance Above for Proper Operation

Description	
WL3015	Dimensions: 30" W, 15" H, 11 5/8" D
WL3018	Dimensions: 30" W, 18" H, 11 5/8" D
WL3021	Dimensions: 30" W, 21" H, 11 5/8" D
WL3615	Dimensions: 36" W, 15" H, 11 5/8" D
WL3618	Dimensions: 36" W, 18" H, 11 5/8" D
WL3621	Dimensions: 36" W, 21" H, 11 5/8" D

Tilt Up Wall Bridge Cabinets Needs Clearance Above for Proper Operation

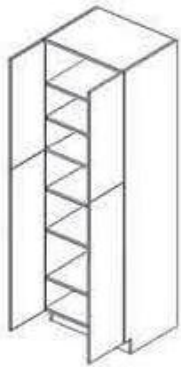
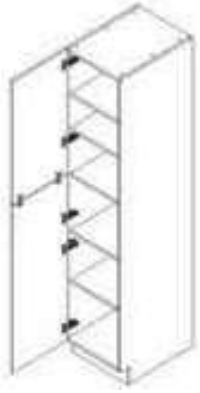
Description	
WT3015	Dimensions: 30" W, 15" H, 11 5/8" D
WT3018	Dimensions: 30" W, 18" H, 11 5/8" D
WT3021	Dimensions: 30" W, 21" H, 11 5/8" D
WT3615	Dimensions: 36" W, 15" H, 11 5/8" D
WT3618	Dimensions: 36" W, 18" H, 11 5/8" D
WT3621	Dimensions: 36" W, 21" H, 11 5/8" D

Double Door Pantry Cabinets

Top Door Same Height as Coordinating Wall Cabinets

One Fixed Shelf

Five Adjustable Shelves



	Description
PC- D1884 – R / L	Dimensions: 18" W, 84" H, 23 3/8" D Single Door: Indicated Left or Right Hinge
PC- D1890 – R / L	Dimensions: 18" W, 90" H, 23 3/8" D Single Door: Indicated Left or Right Hinge
PC- D1896 – R / L	Dimensions: 18" W, 96" H, 23 3/8" D Single Door: Indicated Left or Right Hinge
PC- D2484	Dimensions: 24" W, 84" H, 23 3/8" D
PC- D2490	Dimensions: 24" W, 90" H, 23 3/8" D
PC- D2496	Dimensions: 24" W, 96" H, 23 3/8" D
PC- D3084	Dimensions: 30" W, 84" H, 23 3/8" D
PC- D3090	Dimensions: 30" W, 90" H, 23 3/8" D
PC- D3096	Dimensions: 30" W, 96" H, 23 3/8" D
PC- D3684	Dimensions: 36" W, 84" H, 23 3/8" D
PC- D3690	Dimensions: 36" W, 90" H, 23 3/8" D
PC- D3696	Dimensions: 36" W, 96" H, 23 3/8" D

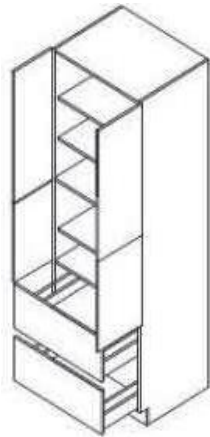
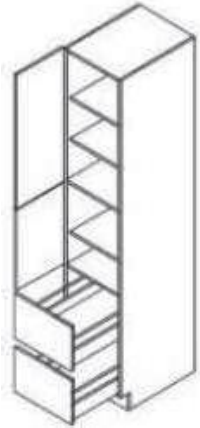
Pantry Cabinets

Top Door Same Height as Coordinating Wall Cabinets

Two Shelves in Top Compartment

Divided Center Compartment with One Shelf

Two 12" Drawers at Bottom



Description	
PC1884 - R / L	Dimensions: 18" W, 84" H, 23 3/8" D Single Door: Indicated Left or Right Hinge
PC1890 - R / L	Dimensions: 18" W, 90" H, 23 3/8" D Single Door: Indicated Left or Right Hinge
PC1896 - R / L	Dimensions: 18" W, 96" H, 23 3/8" D Single Door: Indicated Left or Right Hinge
PC2484	Dimensions: 24" W, 84" H, 23 3/8" D
PC2490	Dimensions: 24" W, 90" H, 23 3/8" D
PC2496	Dimensions: 24" W, 96" H, 23 3/8" D
PC3084	Dimensions: 30" W, 84" H, 23 3/8" D
PC3090	Dimensions: 30" W, 90" H, 23 3/8" D
PC3096	Dimensions: 30" W, 96" H, 23 3/8" D
PC3684	Dimensions: 36" W, 84" H, 23 3/8" D
PC3690	Dimensions: 36" W, 90" H, 23 3/8" D
PC3696	Dimensions: 36" W, 96" H, 23 3/8" D



Pantry Pull Out Cabinets

Top Door Same Height as Coordinating Wall Cabinets
Pantry Unit Pulls Out with Six Wire Baskets

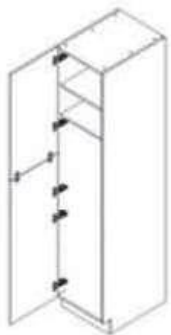
Description	
PC-P1284	Dimensions: 12" W, 84" H, 23 3/8" D
PC-P1290	Dimensions: 12" W, 90" H, 23 3/8" D
PC-P1296	Dimensions: 12" W, 96" H, 23 3/8" D
PC-P1884	Dimensions: 18" W, 84" H, 23 3/8" D
PC-P1890	Dimensions: 18" W, 90" H, 23 3/8" D
PC-P1896	Dimensions: 18" W, 96" H, 23 3/8" D



Tandem Pantry Cabinets

Top Door Same Height as Coordinating Wall Cabinets
Five Large Adjustable Wire Baskets
Six Small Adjustable Wire Baskets
Indicate Left or Right Hinge

Description	
PC-S1884 - R / L	Dimensions: 18" W, 84" H, 23 3/8" D
PC-S1890 - R / L	Dimensions: 18" W, 90" H, 23 3/8" D
PC-S1896 - R / L	Dimensions: 18" W, 96" H, 23 3/8" D



Pantry Broom Cabinet

Top Door Same Height as Coordinating Wall Cabinets
One Fixed Shelf, One Adjustable Shelves

Description	
PC-B1284	Dimensions: 12" W, 84" H, 23 3/8" D
PC-B1290	Dimensions: 12" W, 90" H, 23 3/8" D
PC-B1296	Dimensions: 12" W, 96" H, 23 3/8" D
PC-B1884	Dimensions: 18" W, 84" H, 23 3/8" D
PC-B1890	Dimensions: 18" W, 90" H, 23 3/8" D
PC-B1896	Dimensions: 18" W, 96" H, 23 3/8" D

Single Oven Cabinets

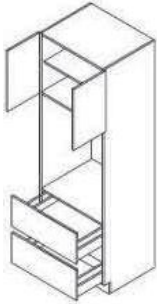
Two Doors on Top

Two 12" high Drawers Bottom

Opening Height: 37 ¼"

Recommended Use with Oven Panel

Interior is White Melamine



	Description
OC3084 S/O	Dimensions: 30" W, 84" H, 23 3/8" D Opening: 37 ¼"H x 28 ½"W
OC3090 S/O	Dimensions: 30" W, 90" H, 23 3/8" D Opening: 37 ¼"H x 28 ½"W
OC3096 S/O	Dimensions: 30" W, 96" H, 23 3/8" D Opening: 37 ¼"H x 28 ½"W

Double Oven Cabinets

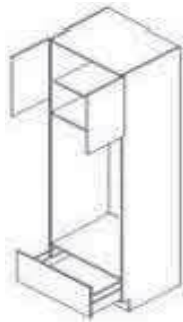
Two Doors on Top

One 12" high Drawers Bottom

Opening Height: 52 ¼"

Recommended Use with Oven Panel

Interior is White Melamine



	Description
OC3084 D/O	Dimensions: 30" W, 84" H, 23 3/8" D Opening: 52 ¼"H x 28 ½"W
OC3090 D/O	Dimensions: 30" W, 90" H, 23 3/8" D Opening: 52 ¼"H x 28 ½"W
OC3096 D/O	Dimensions: 30" W, 96" H, 23 3/8" D Opening: 52 ¼"H x 28 ½"W

Oven Cabinet Panels

Recommended Use with Oven Cabinets

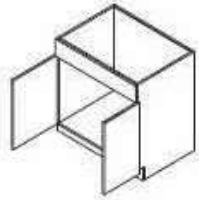
Only Available with Vertical Grain



	Description
OCPNL37S	Single Oven Panel Dimensions: 29 7/8" W, 37 ½" H, ¾" T
OCPNL52D	Double Oven Panel Dimensions: 29 7/8" W, 52 ½" H, ¾" T

Vanity Sink Base Cabinets

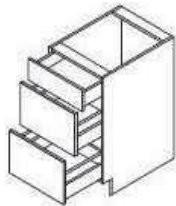
Top Panel False Drawer
Two Doors



Description	
V2421	Dimensions: 24" W, 34 ½" H, 21" D
V3021	Dimensions: 30" W, 34 ½" H, 21" D
V3621	Dimensions: 36" W, 34 ½" H, 21" D

Vanity Drawer Base Cabinets

Three Drawers



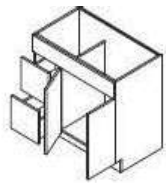
Description	
VDB1221	Dimensions: 12" W, 34 ½" H, 21" D
VDB1521	Dimensions: 15" W, 34 ½" H, 21" D
VDB1821	Dimensions: 18" W, 34 ½" H, 21" D
VDB2121	Dimensions: 21" W, 34 ½" H, 21" D

Vanity Combination Base Cabinets

Full Width Top False Panel
Two Doors

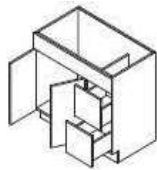
Two Drawers on One Side

Indicate Drawers Left (DL) or Drawers Right (DR)



Drawers Left (DL)

Description	
VSD3621- DL/ DR	Dimensions: 36" W, 34 ½" H, 21" D
VSD4221-DL/ DR	Dimensions: 42" W, 34 ½" H, 21" D

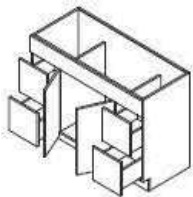


Drawers Right (DR)

Vanity Combination Base Cabinets

Three Top False Panels
Two Doors

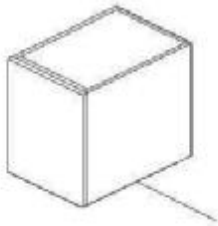
Two Drawers on Both Side



Description	
VSD4821	Dimensions: 48" W, 34 ½" H, 21" D

Floating Vanity Single Door Base Cabinets

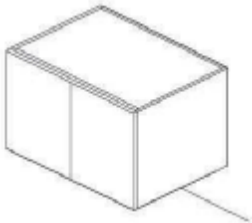
Integrated Subtop
No Shelf



Description	
FV122421	Dimensions: 12" W, 24" H, 21" D
FV152421	Dimensions: 15" W, 24" H, 21" D
FV182421	Dimensions: 18" W, 24" H, 21" D
FV212421	Dimensions: 21" W, 24" H, 21" D

Floating Vanity Double Door Base Cabinets

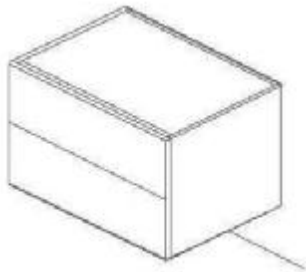
Integrated Subtop
No Shelf



Description	
FV242421	Dimensions: 24" W, 24" H, 21" D
FV302421	Dimensions: 30" W, 24" H, 21" D
FV362421	Dimensions: 36" W, 24" H, 21" D

Floating Vanity Drawer Base Cabinets

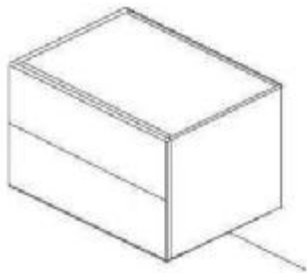
Integrated Subtop
Two 12" High Drawers



Description	
FVDB12-2	Dimensions: 12" W, 24" H, 21" D
FVDB15-2	Dimensions: 15" W, 24" H, 21" D
FVDB18-2	Dimensions: 18" W, 24" H, 21" D
FVDB21-2	Dimensions: 21" W, 24" H, 21" D
FVDB24-2	Dimensions: 24" W, 24" H, 21" D
FVDB30-2	Dimensions: 30" W, 24" H, 21" D
FVDB36-2	Dimensions: 36" W, 24" H, 21" D

Floating Vanity Drawer Sink Base Cabinets

Integrated Subtop
Top False Panel for Plumbing
One 12" High Drawer



Description	
FVDSB24-2	Dimensions: 24" W, 24" H, 21" D
FVDSB30-2	Dimensions: 30" W, 24" H, 21" D
FVDSB36-2	Dimensions: 36" W, 24" H, 21" D

End Panels

Size Options:



Standard Panel
Covers Cabinet Box Only



Extended "e" Panel
Sits Flush with Door



Island "i" Panel
Sits Flush with Door
and Island Panel

Finish Options:



Regular Panel
All Panels White Melamine
on One Side



Finished Both Sides
Indicated by ___ - FF

Wall End Panels



Description	
WDD1230	Dimensions: 11 5/8" W, 30" H, 3/4" T
WDD1236	Dimensions: 11 5/8" W, 36" H, 3/4" T
WDD1242	Dimensions: 11 5/8" W, 42" H, 3/4" T
WDD1230e	Dimensions: 12 3/8" W, 30" H, 3/4" T
WDD1236e	Dimensions: 12 3/8" W, 36" H, 3/4" T
WDD1242e	Dimensions: 12 3/8" W, 42" H, 3/4" T
WDD1248e	Dimensions: 12 3/8" W, 48" H, 3/4" T
WDD1230e- FF	Dimensions: 12 3/8" W, 30" H, 3/4" T
WDD1236e- FF	Dimensions: 12 3/8" W, 36" H, 3/4" T
WDD1242e- FF	Dimensions: 12 3/8" W, 42" H, 3/4" T
WDD1248e- FF	Dimensions: 12 3/8" W, 48" H, 3/4" T

Base End Panels



Description	
BDD24	Dimensions: 23 3/8" W, 34 1/2" H, 3/4" T
BDD24e	Dimensions: 24 1/8" W, 34 1/2" H, 3/4" T
BDD24i	Dimensions: 24 7/8" W, 34 1/2" H, 3/4" T
BDD36i	Dimensions: 36 1/2" W, 34 1/2" H, 3/4" T
BDD48i	Dimensions: 48 1/4" W, 34 1/2" H, 3/4" T Horizontal Grain Only
BDD24e- FF	Dimensions: 24 1/8" W, 34 1/2" H, 3/4" T
BDD24i- FF	Dimensions: 24 7/8" W, 34 1/2" H, 3/4" T
BDD36i- FF	Dimensions: 36 1/2" W, 34 1/2" H, 3/4" T
BDD48i- FF	Dimensions: 48 1/4" W, 34 1/2" H, 3/4" T Horizontal Grain Only

Guide

-	Standard Panels Cover Cabinet Box Only White Melamine Back
"e"	"e" Panels extend 3/4" to Sit Flush With Door White Melamine Back
"i"	"i" Panels extend 1 1/2" to Sit Flush With Door and Island Panel White Melamine Back
FF	Panel Finished Both Sides

Vanity Base End Panels



	Description
VBDD	Dimensions: 21" W, 34 1/2" H, 3/4" T
VBDDe	Dimensions: 21 3/4" W, 34 1/2" H, 3/4" T
VBDDe- FF	Dimensions: 21 3/4" W, 34 1/2" H, 3/4" T
FVBDD	Dimensions: 21" W, 24" H, 3/4" T
FVBDDe	Dimensions: 21 3/4" W, 24" H, 3/4" T
FVBDDe- FF	Dimensions: 21 3/4" W, 24" H, 3/4" T

Tall End Panels

Only Available with Vertical Grain
Grain Runs Longest Direction



	Description
PNL2484	Dimensions: 23 3/8" W, 84" H, 3/4" T
PNL2490	Dimensions: 23 3/8" W, 90" H, 3/4" T
PNL2496	Dimensions: 23 3/8" W, 96" H, 3/4" T
PNL2484e	Dimensions: 24 1/8" W, 84" H, 3/4" T
PNL2490e	Dimensions: 24 1/8" W, 90" H, 3/4" T
PNL2496e	Dimensions: 24 1/8" W, 96" H, 3/4" T
PNL2484e- FF	Dimensions: 24 1/8" W, 84" H, 3/4" T
PNL2490e- FF	Dimensions: 24 1/8" W, 90" H, 3/4" T
PNL2496e- FF	Dimensions: 24 1/8" W, 96" H, 3/4" T

Island End Panels

Only Available with Horizontal Grain
Grain Runs Longest Direction



	Description
PNL9634	Dimensions: 96" W, 34 1/2" H, 3/4" T
PNL9640	Dimensions: 96" W, 40 1/2" H, 3/4" T

Fillers



Description	
BF3	Dimensions: 3" W, 30" H, 3/4" T
BF6	Dimensions: 6" W, 30" H, 3/4" T
WF330	Dimensions: 3" W, 30" H, 3/4" T
WF336	Dimensions: 3" W, 36" H, 3/4" T
WF342	Dimensions: 3" W, 42" H, 3/4" T
WF630	Dimensions: 6" W, 30" H, 3/4" T
WF636	Dimensions: 6" W, 36" H, 3/4" T
WF642	Dimensions: 6" W, 42" H, 3/4" T
WF1.596	Dimensions: 1 1/2" W, 96" H, 3/4" T
WF396	Dimensions: 3" W, 96" H, 3/4" T
WF696	Dimensions: 6" W, 96" H, 3/4" T

Scribe Molding



Description	
SM8	Dimensions: 96" L, 3/4" H, 1/4" T

Toe Kicks



Description	
TK8-AL - 4 1/2	Aluminum Finish Dimensions: 96" L, 4 1/2" H, 1/4" T
TK8-AL - 6	Aluminum Finish Dimensions: 96" L, 6" H, 1/4" T
TK8-UF	Finished to Match Cabinet Doors Dimensions: 96" W, 4 1/2" H, 3/4" T

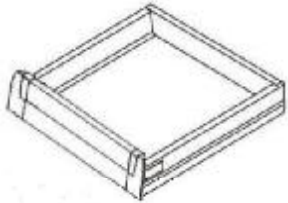
Roll Out Trays

3 ½" High

Soft Close Glides

Metal Box and Face with 5/8" Plywood Bottom and Back Panel

Includes 155° Hinges



Description	
ROT18	Dimensions: 18" W, 3 ½" H, 20" D
ROT21	Dimensions: 21" W, 3 ½" H, 20" D
ROT24	Dimensions: 24" W, 3 ½" H, 20" D
ROT27	Dimensions: 27" W, 3 ½" H, 20" D
ROT30	Dimensions: 30" W, 3 ½" H, 20" D
ROT33	Dimensions: 33" W, 3 ½" H, 20" D
ROT36	Dimensions: 36" W, 3 ½" H, 20" D
ROT42	Dimensions: 42" W, 3 ½" H, 20" D

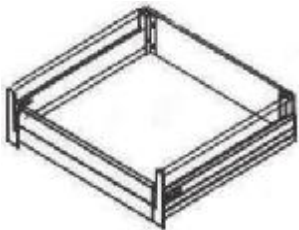
Deep Roll Out Trays

6 ½" High

Soft Close Glides

Metal Box and Face with 5/8" Plywood Bottom and Back Panel

Includes 155° Hinges



Description	
ROT18- Deep	Dimensions: 18" W, 6 ½" H, 20" D
ROT21- Deep	Dimensions: 21" W, 6 ½" H, 20" D
ROT24- Deep	Dimensions: 24" W, 6 ½" H, 20" D
ROT27- Deep	Dimensions: 27" W, 6 ½" H, 20" D
ROT30- Deep	Dimensions: 30" W, 6 ½" H, 20" D
ROT33- Deep	Dimensions: 33" W, 6 ½" H, 20" D
ROT36- Deep	Dimensions: 36" W, 6 ½" H, 20" D
ROT42- Deep	Dimensions: 42" W, 6 ½" H, 20" D

Toe Kick Drawers

3 ½" High

Soft Close Glides

5/8" Plywood Bottom and Back Panel

Includes Matching Drawer Face 4 ¼" High



Description	
TKROT18	Dimensions: 18" W, 3 ½" H, 20" D
TKROT21	Dimensions: 21" W, 3 ½" H, 20" D
TKROT24	Dimensions: 24" W, 3 ½" H, 20" D
TKROT27	Dimensions: 27" W, 3 ½" H, 20" D
TKROT30	Dimensions: 30" W, 3 ½" H, 20" D
TKROT33	Dimensions: 33" W, 3 ½" H, 20" D
TKROT36	Dimensions: 36" W, 3 ½" H, 20" D
TKROT42	Dimensions: 42" W, 3 ½" H, 20" D

Roll Out Plate Organizers

Soft Close Glides

Insert Only

Drip Pan Below

Includes 155° Hinges



Description	
ROT24- PO	Dimensions: 24" W, 20" D
ROT36- PO	Dimensions: 36" W, 20" D

Drawer Plate Organizers

Soft Close Glides

Functions as Drawer Box

Drip Pan Below

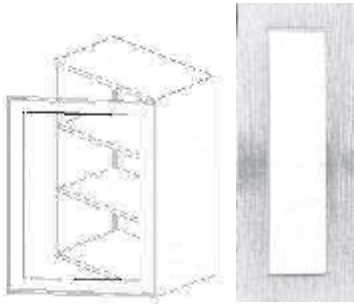
Installs in 2DB or Large Drawer in 3DB Cabinets



Description	
DRWR24-PO	Dimensions: 24" W, 20" D
DRWR36-PO	Dimensions: 36" W, 20" D

30" High Single Door Wall Cabinets Color Matching Glass Door

Two Adjustable Shelves
Doors are Routed for Easy Glass Installation
Glass NOT Included



Description	
WG1230- GD	Dimensions: 12" W, 30" H, 11 5/8" D
WG1530- GD	Dimensions: 15" W, 30" H, 11 5/8" D
WG1830- GD	Dimensions: 18" W, 30" H, 11 5/8" D
WG2130- GD	Dimensions: 21" W, 30" H, 11 5/8" D

30" High Double Door Wall Cabinets Color Matching Glass Doors

Two Adjustable Shelves
Doors are Routed for Easy Glass Installation
Glass NOT Included



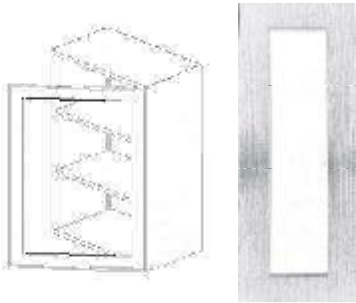
Description	
WG2430- GD	Dimensions: 24" W, 30" H, 11 5/8" D
WG2730- GD	Dimensions: 27" W, 30" H, 11 5/8" D
WG3030- GD	Dimensions: 30" W, 30" H, 11 5/8" D
WG3330- GD	Dimensions: 33" W, 30" H, 11 5/8" D
WG3630- GD	Dimensions: 36" W, 30" H, 11 5/8" D
WG4230- GD	Dimensions: 42" W, 30" H, 11 5/8" D

36" High Single Door Wall Cabinets Color Matching Glass Door

Two Adjustable Shelves

Doors are Routed for Easy Glass Installation

Glass NOT Included



Description	
WG1236- GD	Dimensions: 12" W, 36" H, 11 5/8" D
WG1536- GD	Dimensions: 15" W, 36" H, 11 5/8" D
WG1836- GD	Dimensions: 18" W, 36" H, 11 5/8" D
WG2136- GD	Dimensions: 21" W, 36" H, 11 5/8" D

36" High Double Door Wall Cabinets Color Matching Glass Doors

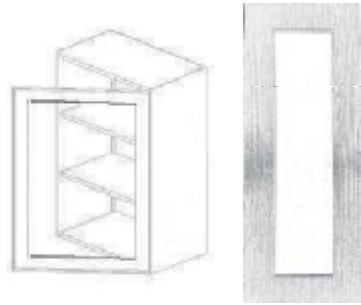
Two Adjustable Shelves

Doors are Routed for Easy Glass Installation

Glass NOT Included



Description	
WG2436- GD	Dimensions: 24" W, 36" H, 11 5/8" D
WG2736- GD	Dimensions: 27" W, 36" H, 11 5/8" D
WG3036- GD	Dimensions: 30" W, 36" H, 11 5/8" D
WG3336- GD	Dimensions: 33" W, 36" H, 11 5/8" D
WG3636- GD	Dimensions: 36" W, 36" H, 11 5/8" D
WG4236- GD	Dimensions: 42" W, 36" H, 11 5/8" D



42" High Single Door Wall Cabinets Color Matching Glass Door

Three Adjustable Shelves
Doors are Routed for Easy Glass Installation
Glass NOT Included

Description	
WG1242- GD	Dimensions: 12" W, 42" H, 11 5/8" D
WG1542- GD	Dimensions: 15" W, 42" H, 11 5/8" D
WG1842- GD	Dimensions: 18" W, 42" H, 11 5/8" D
WG2142- GD	Dimensions: 21" W, 42" H, 11 5/8" D

42" High Double Door Wall Cabinets Color Matching Glass Doors

Three Adjustable Shelves
Doors are Routed for Easy Glass Installation
Glass NOT Included



Description	
WG2442- GD	Dimensions: 24" W, 42" H, 11 5/8" D
WG2742- GD	Dimensions: 27" W, 42" H, 11 5/8" D
WG3042- GD	Dimensions: 30" W, 42" H, 11 5/8" D
WG3342- GD	Dimensions: 33" W, 42" H, 11 5/8" D
WG3642- GD	Dimensions: 36" W, 42" H, 11 5/8" D
WG4242- GD	Dimensions: 42" W, 42" H, 11 5/8" D

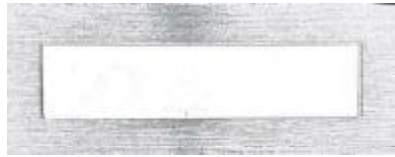
Wall Diagonal Corner Cabinets Color Matching Glass Door

Doors are Routed for Easy Glass Installation
Glass NOT Included



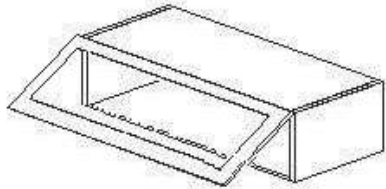
Description	
WDCG2430- GD	Dimensions: 24" W, 30" H, 11 15/15" D Two Adjustable Shelves
WDCG2436- GD	Dimensions: 24" W, 36" H, 11 15/16" D Two Adjustable Shelves
WDCG2442- GD	Dimensions: 24" W, 42" H, 11 15/16" D Three Adjustable Shelves

Wall Glass Cabinets: 42" High



Swing Up Wall Bridge Cabinets Color Matching Glass Door

Doors are Routed for Easy Glass Installation
Glass NOT Included

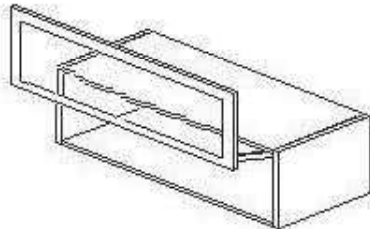


Description	
WSG3015- GD	Dimensions: 30" W, 15" H, 11 5/8" D
WSG3018- GD	Dimensions: 30" W, 18" H, 11 5/8" D
WSG3021- GD	Dimensions: 30" W, 21" H, 11 5/8" D
WSG3615- GD	Dimensions: 36" W, 15" H, 11 5/8" D
WSG3618- GD	Dimensions: 36" W, 18" H, 11 5/8" D
WSG3621- GD	Dimensions: 36" W, 21" H, 11 5/8" D

Lift Up Wall Bridge Cabinets

Color Matching Glass Door

Needs Clearance Above for Proper Operation
Doors are Routed for Easy Glass Installation
Glass NOT Included

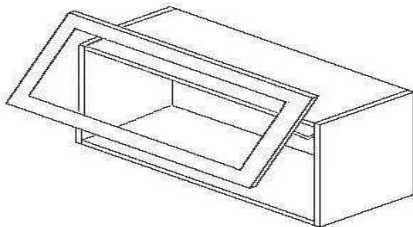


Description	
WLG3015- GD	Dimensions: 30" W, 15" H, 11 5/8" D
WLG3018- GD	Dimensions: 30" W, 18" H, 11 5/8" D
WLG3021- GD	Dimensions: 30" W, 21" H, 11 5/8" D
WLG3615- GD	Dimensions: 36" W, 15" H, 11 5/8" D
WLG3618- GD	Dimensions: 36" W, 18" H, 11 5/8" D
WLG3621- GD	Dimensions: 36" W, 21" H, 11 5/8" D

Tilt Up Wall Bridge Cabinets

Color Matching Glass Door

Needs Clearance Above for Proper Operation
Doors are Routed for Easy Glass Installation
Glass NOT Included



Description	
WTG3015- GD	Dimensions: 30" W, 15" H, 11 5/8" D
WTG3018- GD	Dimensions: 30" W, 18" H, 11 5/8" D
WTG3021- GD	Dimensions: 30" W, 21" H, 11 5/8" D
WTG3615- GD	Dimensions: 36" W, 15" H, 11 5/8" D
WTG3618- GD	Dimensions: 36" W, 18" H, 11 5/8" D
WTG3621- GD	Dimensions: 36" W, 21" H, 11 5/8" D



Handles

	Description
HANDLE-2	Dimensions: 2" L
HANDLE-6	Dimensions: 6" L
HANDLE-9	Dimensions: 9" L
HANDLE-12	Dimensions: 12" L
HANDLE-13 ½	Dimensions: 13 ½" L For 27" Wide Cabinets
HANDLE-15	Dimensions: 15" L
HANDLE-16 3/16	Dimensions: 16 3/16" L For Wall Diagonal Corner Cabinets
HANDLE-16 ½	Dimensions: 16 ½" L For 33" Wide Cabinets
HANDLE-18	Dimensions: 18" L
HANDLE-19 ½	Dimensions: 19 ½" L For 39" Wide Cabinets
HANDLE-21	Dimensions: 21" L
HANDLE-24	Dimensions: 24" L
HANDLE-27	Dimensions: 27" L
HANDLE-30	Dimensions: 30" L
HANDLE-33	Dimensions: 33" L
HANDLE-36	Dimensions: 36" L

Marketing Tools

	Description
Sample Chip	Dimensions: 4" x 4 ½"
Sample Door	Dimensions: 12" W x 15" H
Complete Swatch Book Set	Includes all 100 colors
Mini Base Cabinet	Dimensions: 9" W, 20" H, 16" D One Drawer, One Full Depth Shelf Shows Cabinet Construction Order in Color of Choice
Printed Unbranded Brochure	
PDF Unbranded Brochure	

Customizations

	Description
Reduced Depth	Wall Cabinets
	Base Cabinets Minimum Depth with Functioning Drawer: 14"
	Tall Cabinets
Reduced Width and/ or Reduced Height	Wall Cabinets
	Base Cabinets
	Tall Cabinets
Additional Drawer*	Base Cabinets Minimum Depth with Functioning Drawer: 14"
	Tall Cabinets
	*Only one modification fee per cabinet is applicable.
Custom Panels	Custom Size
	Panel Finished Both Sides
Specialty Hinges	Replacement Standard Hinge
	155° Hinge For Proper Roll Out Tray Operation Included with installation of ROT
	Swing Up Hinge
	Lift Up Hinge
	Tilt Up Hinge
	Bifold Hinge Includes cabinet conversion and installation

